

Your **Source**
for **Seamless**
Industrial
Supply Chains

Company
Profile

 info@eit-ksa.com
www.eit-ksa.com

Company Overview

Expert International Trading Est. Operating from Dammam & Jubail as a rapidly expanding organization offering a wide range of materials such as fitting materials, safety materials, cables, manpower and equipment rental. As a result of our continuous pursuit for recognition and devoted customer service during the past few years, we have secured the confidence and appreciation of our clients. Our manpower supply involves qualified and technically skilled staff in the field of Civil, Mechanical and Instrumental etc. In different categories such as Engineers, Technicians,

Welder and skilled and unskilled workers. We provide all facilities to the workforce as per Saudi Labor Law and this setup has proved to be the strategy of our persistent success. We have also an efficient group of persons for management.

Our Vision

To create a reputed niche as a sought-after industrial service provided by setting high standards in every level of operations thereby providing complete customer satisfaction.

Our Mission

To ensure the highest standards of quality excellence by staying abreast of latest developments in the fields we cater to and hone our manpower to be the best by all norms expected by our clients.

OUR COMMITMENTS

The following outlines of Expert International Trading Est. seeks to conduct externally as a company.

- We strive to meet and exceed our client's expectations to foster long-term relationships.
- We deal with our clients with respect to cultivate a team approach where experience is applied with dedicated enthusiasm.
- We use value engineering, effective business practices and hard work to deliver the good quality products and services.
- We preserve reliability whatever we admit, believe and do.
- We admire the creation in which we function; provide what we suppose to get.

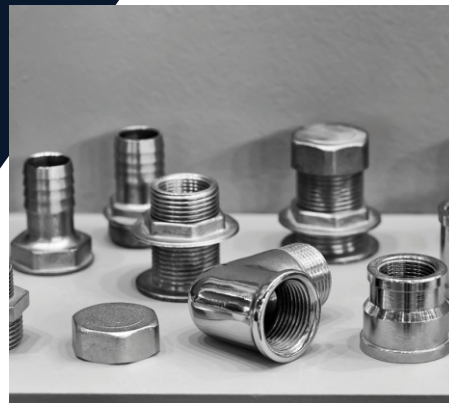
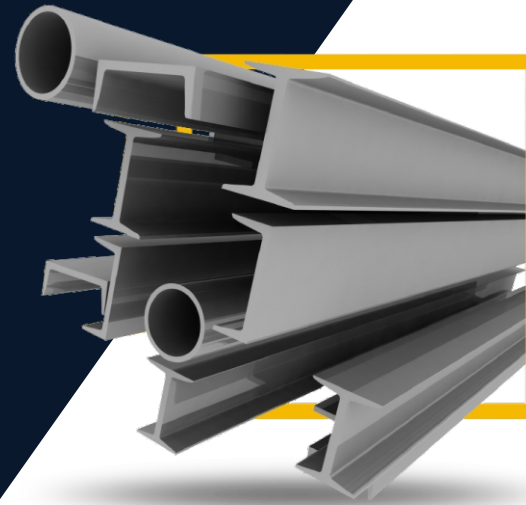


Material Trading

With a global network of quality assured suppliers, **Expert International Trading Est** material supply Services from quality manufacturer of the right component parts or finished products for you at the right price.

Products:

- Grounding, Earthing and Lightning Material
- Cable Jointing Systems.
- Power/Control/Telecom Cables.
- Cable Trays.
- Electrical Fittings and Wiring Accessories.
- Cable Management Systems
- Electrical Bulk Material
- Panel Boards, Circuit Breakers, Safety Switches.
- Transformers and Motor control centers,
- Indoor/Outdoor Lighting Equipment's.
- Electrical Test Equipments.
- Mechanical Materials.
- Power Supplies.
- Safety Products.



PIPES

QUALITY STANDARD FOR PIPE

High quality Pipe is all made and controlled to the relevant standards such as: ASME, ASTM, BS and DIN/WERKSTOFFE.

SIZES FOR PIPE

All Pipe is available available in sizes from 1/8" through to 64" Nominal Bore.

MATERIAL GRADES FOR PIPE

All Pipe is available in the following material grades:

STAINLESS STEEL

- A312 304/L
- 310
- 316/L
- 321/H
- 347/H
- 410
- 440
- 904L

CARBON STEEL

- A106 Gr.B
- A106 Gr.C
- API SLB

LOW TEMPERATURE

- ASTM A333Gr.6/3

ALLOY STEEL

- A335 P1, P5, P9, P11, P12, P22, P91

HIGH SPEED

- API SL X42, 52, 60, 65, 70

6% MOLY / DUPLEX & SUPER DUPLEX

- UNS S31254
- UNS S31803, S32205
- UNS S32760, S32750, S32507

NICKEL ALLOYS

- 200, 400, K500, 600, 625, 800, 825

ALLOYS

- ALLOY 20
- ALLOY C
- ALLOY C276
- ALLOY B2

ALUMINIUM

- 5083, 5154, 5251, 6061, 6063, 6082

UNUSUAL GRADES

- Bronze, Brass, Copper
- Cupro Nickel & Titanium



FLANGES

QUALITY STANDARD FOR FLANGES

High quality Flanges all made and controlled to the relevant standards such as: ASME, ASTM, BS and DIN/WERKSTOFFE.

SIZES FOR FLANGES

All valves are available available in sizes from 1/4" through to any size.

WALL THICKNESS FOR FLANGES

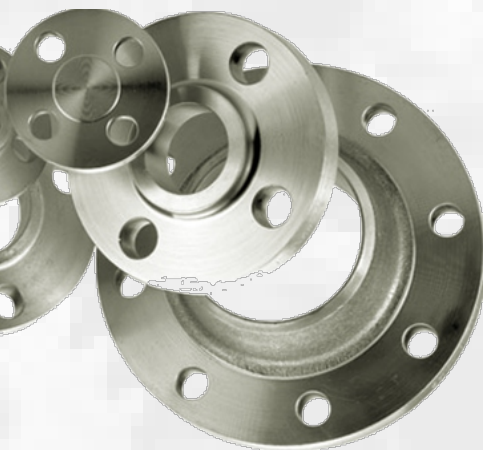
Schedule 5s through to Schedule XXS and heavier.

DIMENSIONS AND PRESSURE RATINGS FOR FLANGES:

- ANSI, MSS- SP-44, BS3293, API 605 150lb through to 2500lb
- Flange Facings: Raised Face, Ring Type Joint, Large Tongue & Groove, Small Tongue & Groove
- BS4504 - PN6, 10, 16, 25, 64
- BS10 - Table D, E, F, & H
- DIN Standards
- Special items according to customer drawings.

MATERIAL GRADES FOR FLANGES

Flanges are available in the following material grades:



BUTTWELD FITTINGS

QUALITY STANDARD FOR BUTTWELD FITTINGS:

High quality buttweld fittings all made and controlled to the relevant standards such as: ASME,

ASTM, BS and DIN/WERKSTOFFE.

SIZES FOR BUTTWELD FITTINGS:

Buttweld Fittings are available available in sizes from 1/4" through to any size.

WALL THICKNESS FOR BUTTWELD FITTINGS:

Schedule 5s through to Schedule XXS and heavier.

DIMENSIONS FOR BUTTWELD FITTINGS:

- BS 1640/ANSI - ASME B16.9 - B16.28 - B16.25
- Seamless, EFW, ERW, DSAW and Forged

STAINLESS STEEL

- A312 304/L
- 310
- 316/L
- 321/H
- 347/H
- 410
- 440
- 904L

CARBON STEEL

- A106 Gr.B
- A106 Gr.C
- API SLB

LOW TEMPERATURE

- ASTM A333Gr.6/3

ALLOY STEEL

- A335 P1, P5, P9, P11, P12, P22, P91

6% MOLY / DUPLEX & SUPER DUPLEX

- UNS S31254
- UNS S31803, S32205
- UNS S32760, S32750, S32507

HIGH SPEED

- API SL X42, 52, 60, 65, 70

6% MOLY / DUPLEX & SUPER DUPLEX

- UNS S31254
- UNS S31803, S32205
- UNS S32760,

NICKEL ALLOYS

- 200, 400, K500, 600, 625, 800, 825

ALLOYS

- ALLOY 20
- ALLOY C
- ALLOY C276
- ALLOY B2

ALUMINIUM

- 5083, 5154, 5251, 6061, 6063, 6082

UNUSUAL GRADES

- Bronze, Brass, Copper
- Cupro Nickel & Titanium

VALVES

QUALITY STANDARD FOR VALVES

High quality Valves all made and controlled to the relevant standards such as: ASME, ASTM, BS and DIN/WERKSTOFFE.

TYPES

- Gate Valves
- Ball Valves
- Globe Valves
- Check Valves
- Butterfly Valves
- Safety Valves
- Needle Valves

PRESSURE RATINGS

- CL150, CL300, CL600, CL800 - PN10, PN16,
- PN25, PN40 - 1000/2000/3000 PSI

SIZES RANGE

- 14 to 14" (in all Schedules)
- Larger sizes are available on request bases.



MATERIALS

- Carbon Steels 105 and ASME SA216 Grade WCB
- Stainless Steel CF8M, LF2, 304, 316
- Cast Iron
- Bronze
-

END CONNECTION

- NPT
- SW
- Flanged



FIRE & SAFETY VALVES

This standard covers iron-body, resilient-seated gate valves, including tapping gate valves, with nonrising stems (NRS) and outside-screw-and-yoke (OS&Y) rising stems for water supply service. 1.1.1 Sizes. Gate valves covered by this standard are 3 in. (75 mm), 4 in. (100 mm), 6 in. (150 mm), 8 in. (200 mm), 10 in. (250 mm), 12 in. (300 mm), 16 in. (400 mm), and 20 in. (500 mm) nominal pipe size (NPS). Sizes refer to the nominal diameter, in inches (or millimeters), of the waterway through the inlet and outlet connections and the closure area. 1.1.2 Valve pressure rating. The minimum design working water pressure shall be 200 psig (1,380 kPa (gauge]) for 3- through 12-in. (75- through 300-mm) size and 150 psig (1,034 kPa (gauge]) for 16-and 20-in. (400-and 500-mm) sizes. 1.1.3 Conditions and materials not covered. This standard is not intended to cover special conditions of installation or operation, such as built-in power drive, installation in vertical or steeply inclined lines, conveyance of unusually corrosive water, or excessive water hammer. Such conditions are beyond the intended scope of this standard and require special consideration in design and construction. Joint accessories for end connections, such as bolts, gaskets, glands, follower rings, and so forth, are not covered in this standard.

TYPES

- AWWA Resilient seated gate valves NRS/OS&Y FLANGED ENDS 200/250PSI
- AWWA Resilient seated gate valves NRS PUSH ON ENDS 200/250PSI
- AWWA Resilient seated gate valves NRS MJ+MJ / FL+MJ 200/250PSI
- AWWA Resilient seated gate valves NRS THREAD ENDS 200/250PSI

DESCRIPTION

- Design confirms to: AWWA C509/C515
- Flanged confirms to: ANSI B16.10
- Test & Inspection: AWWA C509/C515
- Suitable medium: water and neutral liquid
- Working temperature: NBR 800, EPDM<1200
- Operator: handwheel, nut, extension stem, gear opera FL+MJ 200/250PSI
- AWWA Resilient seated gate valves NRS THREAD ENDS 200/250PSI



INSTRUMENTATION TUBE FITTINGS

TUBE SIZE

1/16"OD TO 2"OD, 2MM OD TO 50MM OD

MATERIAL GRADES

SS 304, SS 316, BRASS, SPECIAL ALLOYS

THREAD

NPT, BSP, BSPT, UNF, ISO, SAE ETC.

PRESSURE RATING

6000PSI FOR STAINLESS STEEL, 300/1000/3000PSI FOR BRASS

Pressure Gauges - Dry Gauge - Bottom Mount

Ideal for indicating pressure above atmospheric. Usable on air, oil, gas, water or any other pressure medium which does not attack bronze. Install protective syphon when used on steam.

Pressure Gauges - Liquid Filled - Bottom Mount

For severe service requiring a waterproof, steamproof or weatherproof gauge, with the added problems of pulsation and vibration. This pressure gauge has shock absorbing polyglide movement plus liquid filling to absorb effect of vibration and pulsation.

INSTRUMENTATION TUBE FITTINGS

Tube Fittings and Tools

- Available in tube sizes 1/16 to 2 in. and 2 to 50 mm
- Consistent gaugeability upon initial installation
- Easy to disassemble and reassemble
- Wide variety of materials and configurations
- Manual and hydraulic swagers; gauges, wrenches

Instrumentation Valves

- Variety of end connections including integral Swagelok tube fittings
- Broad operating temperature range
- Large selection of sizes and materials
- Minimal dead volume and entrapment zones

Types: Ball, Needle, Check, Relief, Plug, Metering, Toggle, Manifold, Bleed and Purge

General Industrial Fittings

- Available in sizes 1/16 to 2 in. and 2 to 50 mm
- Wide variety of materials and configurations
- Pressures from vacuum to 60 000 psi (4134 bar)
- NPT, ISO/BSP, and SAE threads

Types: Pipe, Weld, Vacuum, Flange, Medium-Pressure

Process Valves and Manifolds

- Integral tube fitting ball valves in sizes up to 2 in. and



- 50 mm
 - Flanged process interface valves up to 2 in. (DN50)
 - Large variety of special application valves
- Types:** Ball, Needle, Single Block, Single Block and Bleed, Double Block and Bleed

High-Purity Fittings

- Available in sizes 1/16 to 1 in. and 6 to 18 mm
 - High-purity stainless steels
 - Wide variety of configurations
- Types:** VCR® Face Seal, VCO® Face Seal, Micro-Fit®, Weld, TS Biopharm Ferrules and Caps

Regulators

- Instrumentation-grade and ultrahigh-purity models
- Unique design features such as metal-to-metal seal to atmosphere
- Spring-, dome-, and air loading
- Self-vent and captured-vent options

Types: Diaphragm Sensing, Piston Sensing, Pressure Reducing, Back Pressure, Vaporizing, Ultrahigh-Purity, Modular

FASTENERS AND STUD BOLTS

QUALITY STANDARD FOR FASTENERS AND STUD BOLTS

High quality Fasteners and Stud Bolts all made and controlled to the relevant standards such as: ASME, ASTM, BS and DIN/WERKSTOFFE.

SIZES FOR FASTENERS AND STUD BOLTS

All Fasteners and Stud Bolts are available available in any size

STUD BOLTS & NUTS

Carbon Steel A193 Gr. B7/A194 Gr. 2H
Stainless Steel A193 Gr.B8/A194 Gr.B8 (SS304)
A193 Gr.B8M/A194 Gr.B8M (SSs316)

HEXAGONAL BOLT

A325, A490, A193 Gr.B7,F10T, Gr.5, Gr.8, Gr.8.8, SS304, SS316

- Socket Screws
- Nuts
- Pins
- Screws
- Washers
- Eye Bolts
- Expansion Bolts
- Flange Bolt
- Anchor Bolt ("J", "L", "L" etc)
- U-Bolt
- Turnbuckle
- Dyna Bolt
- etc



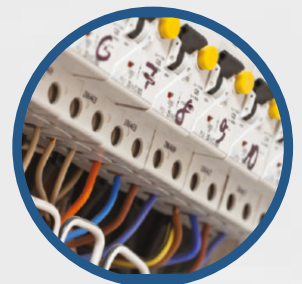
ELECTRICAL

Gulf Timing is one of the major electrical wholesale distributors of electrical products and related services to contractors and end users. The growth and success we experience is through a network of established distributors and professional sales and technical engineers throughout the kingdom.

- Grounding & Lightning Materials
- Rigid Steel Conduits
- Electrical Metallic Tubing
- Flexible Metallic Conduits
- PVC Pipes

- Conduit Boxes
- Enclosures/Cabinets
- Conduit Fittings & Accessories
- Cable Tray & Ladders
- Circuit Breakers

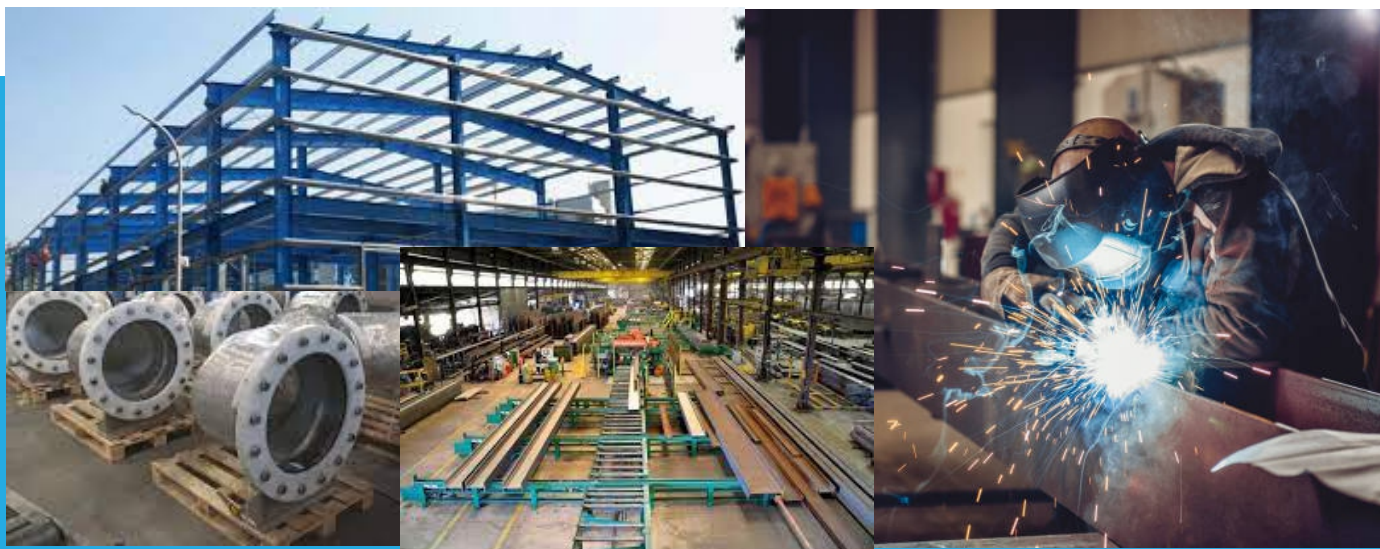
- Wiring Devices
- Wiring and Cabling Accessories
- Power Cables, LV, MV, HV
- Wires & Cables
- Communication & Control Cables



Steel fabrication

Expert International Trading Est.! We are your go-to experts for all your steel fabrication needs. With years of experience in the industry and a team of skilled professionals, we are equipped to handle projects of all sizes, from small-scale to large-scale steel fabrication work. Whether it's customizing steel structures, designing architectural elements, or creating industrial equipment, our dedicated team ensures the highest quality and precision in every project we

undertake. In addition to our exceptional fabrication services, we also specialize in on-site erection. Our expert team not only fabricates steel components but also ensures their seamless installation at your desired location. We understand the importance of proper erection techniques to ensure the structural integrity and safety of your project. With our attention to detail and commitment to delivering results on time, you can trust Wise Solutions to handle every aspect of your steel fabrication and erection needs, providing you with reliable and efficient solutions.



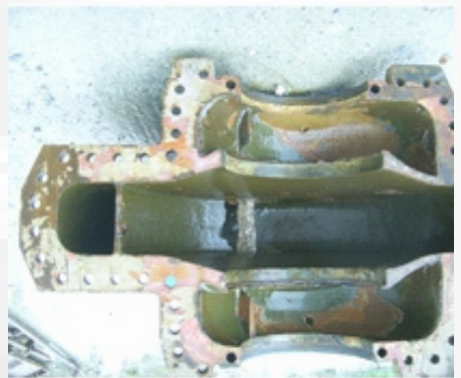
RUSTX Solution for all surface Engineering Needs:



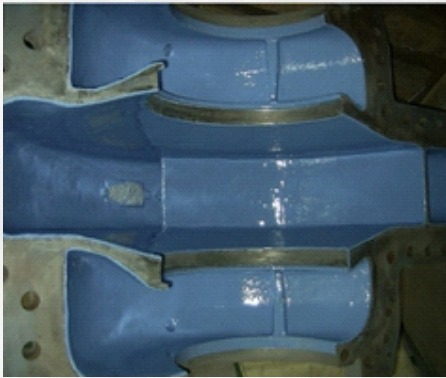
Internal Coating



Internal Coating



Internal Coating



Internal Coating



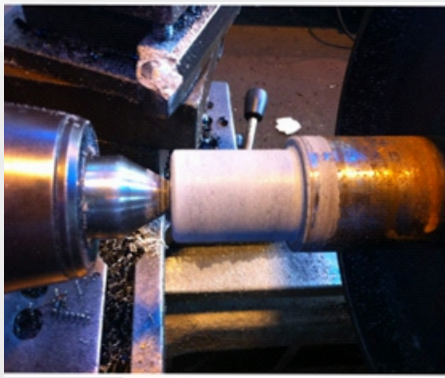
Internal Coating



Internal Coating



Internal Coating



Internal Coating



Internal Coating



Internal Coating



Internal Coating



Internal Coating

RUSTX Solution for all surface Engineering Needs:



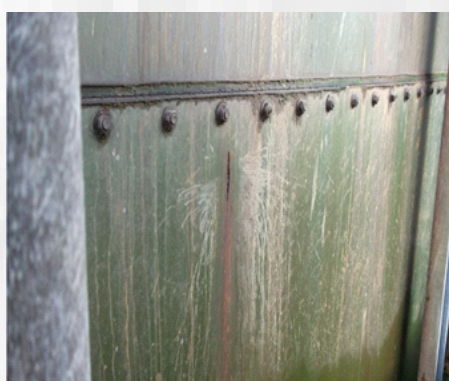
Heat Exchanger
Repair & Protection



Heat Exchanger
Repair & Protection



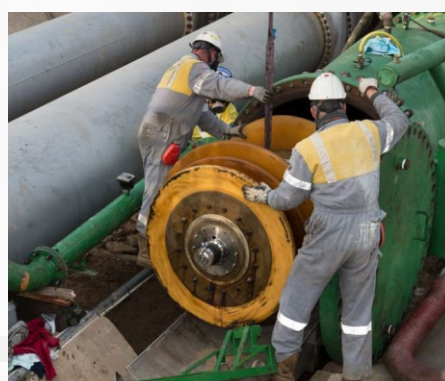
Heat Exchanger
Repair & Protection



Heat Exchanger
Repair & Protection



Heat Exchanger
Repair & Protection



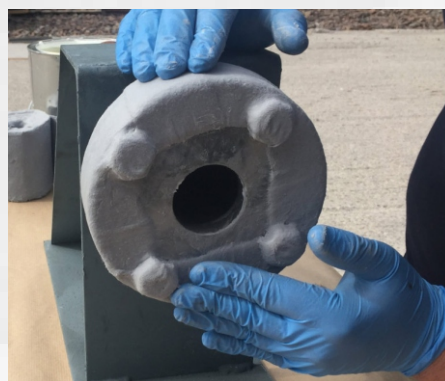
Heat Exchanger
Repair & Protection



Novel Solutions



Novel Solutions



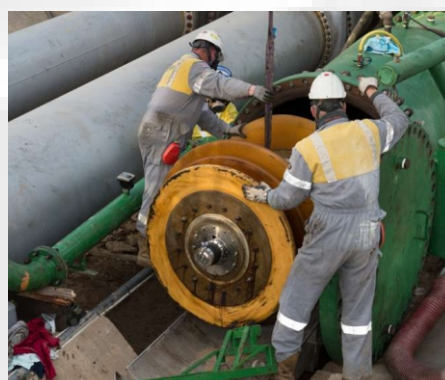
Novel Solutions



Novel Solutions



Novel Solutions



Novel Solutions

OUR VALUED CLIENTS

We have proven our commitments by providing quality, timely and cost-effective services to our esteemed and valuable clients. Some of the reputed and renowned companies for which we have provided services are.



 <p>أرامكو السعودية saudi aramco</p>	 <p>بترو رابغ Petro Rabigh</p>	 <p>SAIPEM</p>	 <p>JGC JGC Gulf International Co. Ltd.</p>	 <p>HYUNDAI ENGINEERING & CONSTRUCTION</p>
 <p>www.gusan.co.kr GUSAN</p>	 <p>VEOLIA</p>		 <p>SULZER</p>	 <p>DOOSAN</p>
 <p>BECHTEL</p>	 <p>GS E&C</p>	 <p>SUEZ</p>	 <p>Rawabi روابي</p>	 <p>Vallianz</p>
 <p>中国石化 SINOPEC</p>	 <p>SEPCO 山东电建</p>	 <p>中国水电 SINOHYDRO</p>	 <p>أنابيب ANABEEB</p>	 <p>TEKFEN</p>
 <p>شركة جنس للخدمات البحرية Jana Marine Services Co. LLC</p>	 <p>مطابقة MOTABA AH</p>	 <p>SINOPEC</p>	 <p>صدارة Sadara</p>	 <p>ساتورب satorp</p>

**Building on diversity
and experience to
construct a
Quality future.**

رؤية
VISION
2030
المملكة العربية السعودية
KINGDOM OF SAUDI ARABIA

expert
International Trading

Get in Touch

+966 13 841 2220 / 222

info@eit-ksa.com
www.eit-ksa.com

Al Mazryah area, King Abdullah street,
Dammam - 32414
Kingdom of Saudi Arabia

